

Accessing the filesystem of an IPC with firmware V7 and "Winscp"

Memo

Overview

The software „Winscp“ can be used to do the following operations:

- Copy or backup data from the IPC to the host system and vice versa
- Show the system and cmm log files
- Update the firmware

Required software

Download:

Server: DEWET-FS-001

Folder: offzdok\EntwFirmware\Tools\V7Tools\winscp427.zip

Hinweis:

WinSCP doesn't need any installation. To use WinSCP simply unpack the ZIP-file in a folder and open WinSCP.EXE.



brown & sharpe

CogniTens



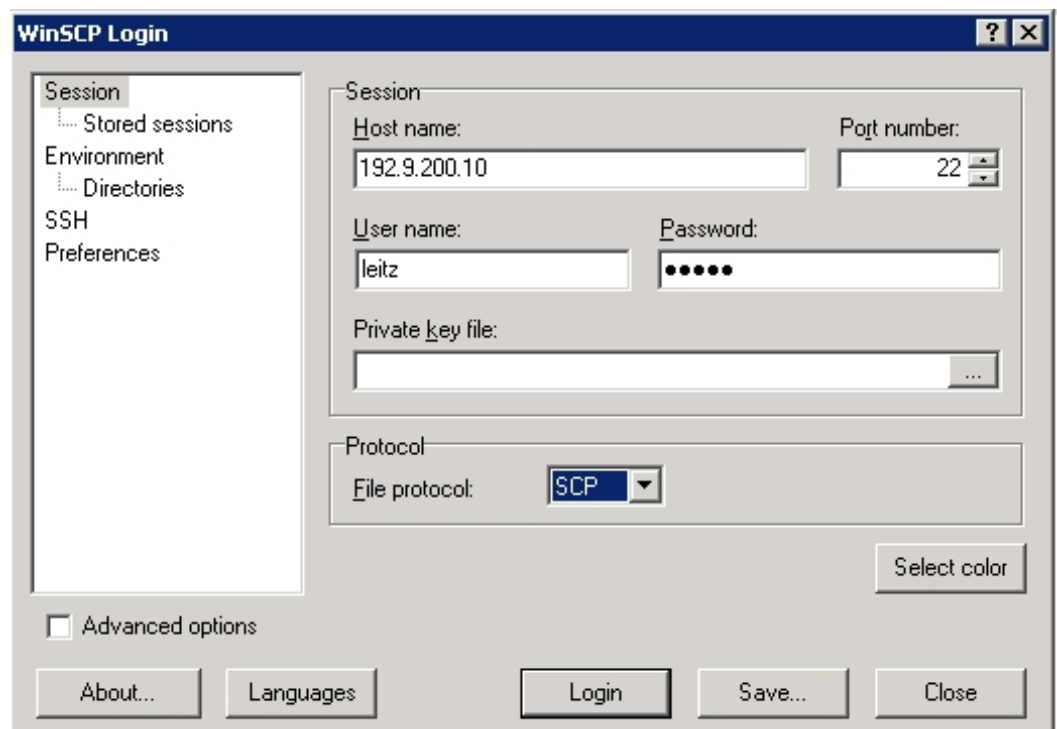
podmis

ROMER

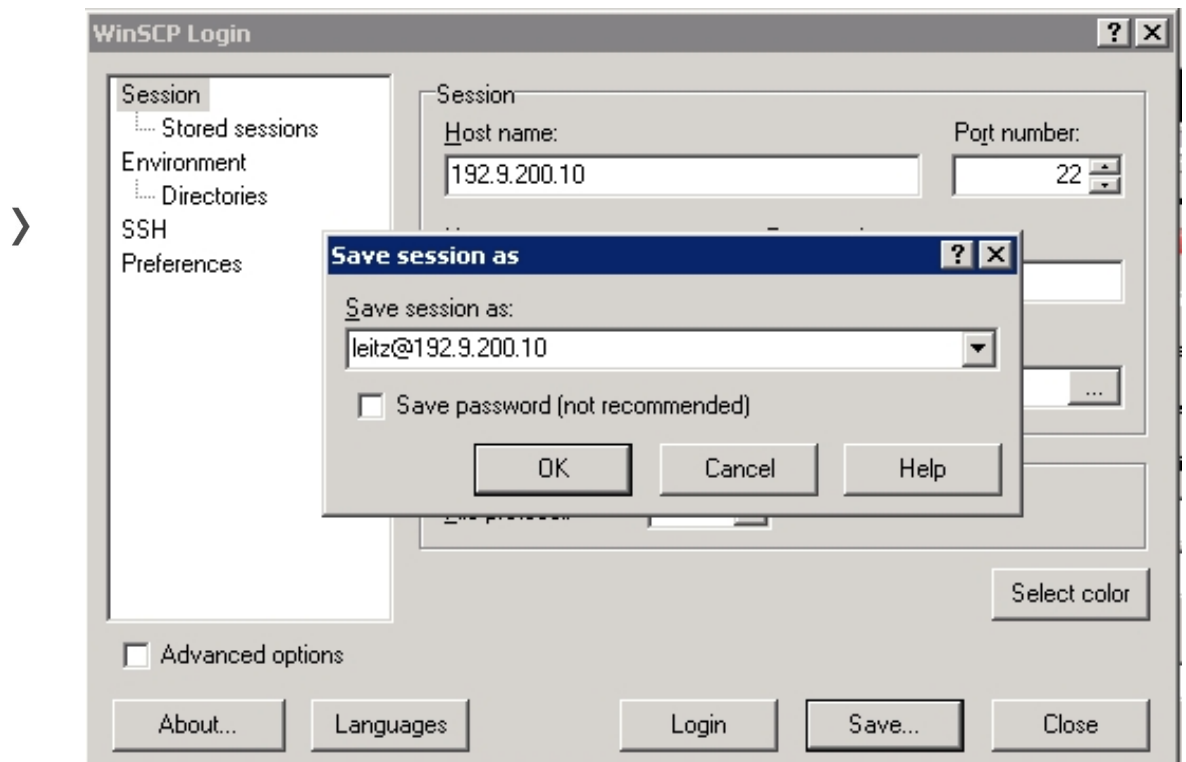


Konfiguration für SSH-Zugriff (Linux-Kommandozeile)

1. Open WinSCP
2. Use leitz for user name and password.
3. Enter the machines IP-Adresse and select SCP in the protocol field.



4. You may save the session for the next use.



5. Now you see two windows, one of your host, the other of the IPC. You may copy files in both directions and this will work for the very most files. If it fails the user may not have the proper rights.

Some notes:

- WinSCP runs in parallel to Quindos or PC-DMIS or Putty or Hyperterm
- WinSCP runs with or without running firmware.
- Avoid to transfer files during scanning or other important things.
- Simply kill WinSCP if you're finished.

WARNING:

This tool is very powerfull. You can easily destroy the system, if you delete or replace files you better should not delete or replace.

Do some training on a „non customer“ machine before you play in the field !

Absolutely no Warranty!

